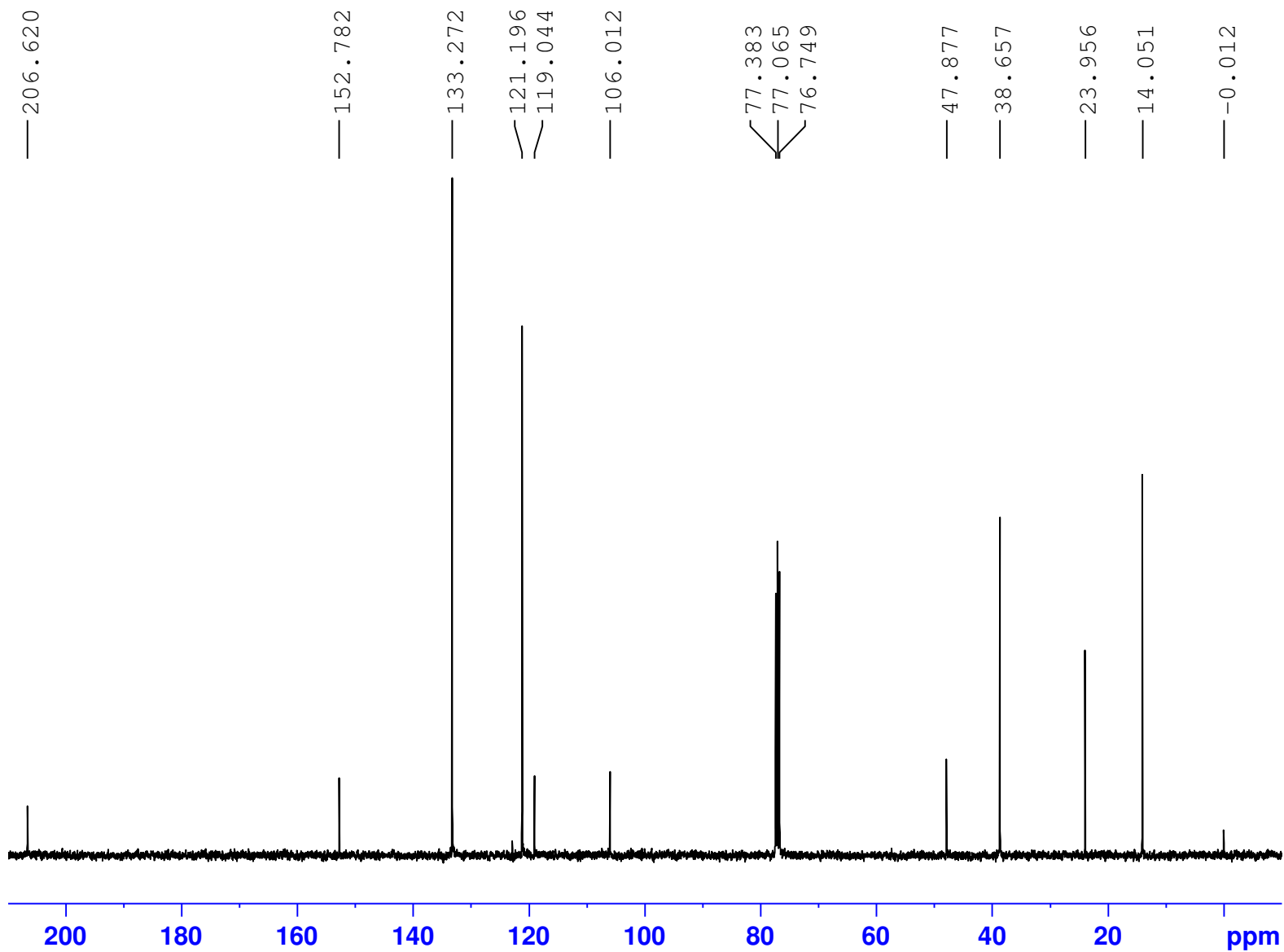


7FS1005Bx1-A

**Av-400C**



Current Data Parameters  
NAME Mar07-2018  
EXPNO 10  
PROCNO 1

F2 - Acquisition Parameters  
Date\_ 20180307  
Time 19.12  
INSTRUM spect  
PROBHD 5 mm PABBO BB/  
PULPROG zgpg30  
TD 32768  
SOLVENT CDC13  
NS 320  
DS 4  
SWH 28409.092 Hz  
FIDRES 0.866977 Hz  
AQ 0.5767168 sec  
RG 199.33  
DW 17.600 usec  
DE 6.50 usec  
TE 298.1 K  
D1 1.00000000 sec  
D11 0.03000000 sec  
TD0 1

===== CHANNEL f1 =====  
SFO1 100.6414394 MHz  
NUC1 13C  
P1 9.05 usec  
PLW1 60.25600052 W

===== CHANNEL f2 =====  
SFO2 400.2020010 MHz  
NUC2 1H  
CPDPRG[2] waltz16  
PCPD2 90.00 usec  
PLW2 19.95299911 W  
PLW12 0.33147001 W  
PLW13 0.26848999 W

F2 - Processing parameters  
SI 16384  
SF 100.6303700 MHz  
WDW EM  
SSB 0  
LB 2.00 Hz  
GB 0  
PC 1.40